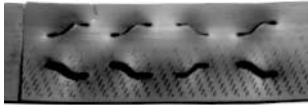


SPC114

Pneumatic Sealless Combination Tool for Steel Strapping

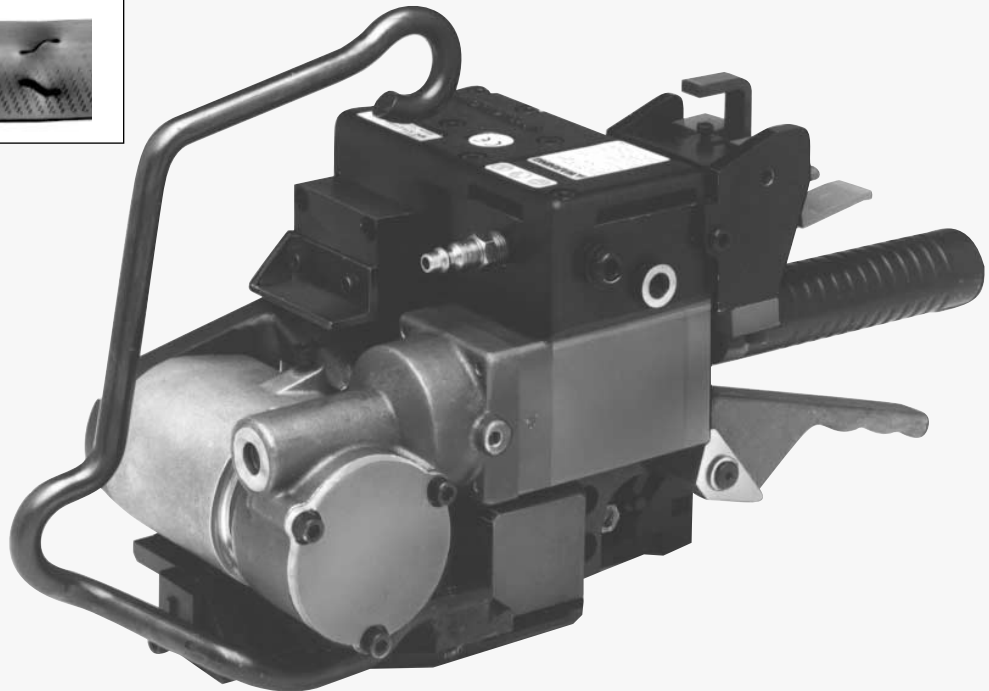
Fourth key reverse lock joint

Prevents the strap joint from opening in either direction.



Simple maintenance/low operating cost

All normal wear parts are easily accessible and simple to replace.



Easy manual slack pull
Reduces tensioning time.

Made in the U.S.A.

Specifications:

For use on 1-1/4" x .025"
to 1-1/4" x .031"
(32 x 0.64mm to 32 x 0.79mm)
Magnus® steel strapping.

Sealing cycle: Less than one second

Tension: Up to 3,200 lbs.

Base length: 7"

Weight: 37 lbs.

The SPC sealless combination tool is designed for Magnus® strapping in sizes ranging from 1-1/4" x .025" to 1-1/4" x .031".

It is ideal for strapping lumber, panel, steel and other products.

Its unique sealer die insert provides lower operating costs than competitive models in this category. It is also the lightest weight tool in this category.

 **SIGNODE®**

180 Hastings Dr.
Buffalo Grove, IL 60089-6989